



# 1952 Concordia Yawl

Boat Type: Yawl

Address: Rockport, ME, US

Price: \$140,000



## OVERVIEW

We have long been familiar with MEMORY V (ex Winnie of Bourne and Take Five), and know her to be a truly exceptional Concordia. The initial rebuild by Peter Gallant was particularly well thought out and executed, and the subsequent work by Rockport Marine is to the highest of standards. Her cosmetics are stunning, and she sails exceptionally well with her rig modifications. In many ways she is "like new", and is highly recommended. She is now back on the market because of changes in her owner's circumstances and is an exceptional opportunity to own one of the best!

## SPECIFICATIONS

### Basic Information

Manufacturer:	Concordia	Vessel Name:	MEMORY V
Model:	Yawl	Boat Type:	Yawl
Year:	1952	Hull Material:	Wood
Category:	Sail	Hull Type:	
Condition:	Used	Hull Color:	
Location:	Rockport, ME, US	Designer:	Hunt/Howland
Available for sale in U.S. waters:	Yes	Flag of Registry:	

### Dimensions & Weight

Length:	39 ft - 11.89 meter	Draft - max:	-
LOA:	-	Bridge Clearance:	-
Beam:	10 ft 2 in - 3.1 meter	Dry Weight:	-

### Engine

Make:	Yanmar	Engine Type:	Inboard
Model:	3YM30AE	Drive Type:	
Engine(s):	1	Fuel Type:	Diesel
Hours:	15	Horsepower:	28 (Individual), 28 (combined)
Cruise Speed:	-	Max Speed:	-
Range:	-	Joystick Control:	No

### Tank Capacities

Fuel Tank:	35 gallons - 1 tank(s)	Holding Tank:	-
Fresh Water Tank:	100 gallons - 1 tank(s)		

### Accommodations

Total Cabins:	-	Crew Cabins:	-
Total Berths:	-	Crew Berths:	-
Total Sleeps:	-	Crew Sleeps:	-
Total Heads:	-	Crew Heads:	-
Captains Cabin:	-		

## DESCRIPTIONS

### Construction

Tight seam carvel 1" African mahogany planking on 1 3/8" white oak frames, 9" centers, oak and locust deadwood and floor timbers, silicon bronze fastened. Fiberglass covered deck, painted 2015 non-skid Awlgrip. Teak self bailing cockpit, bridge deck, and tiller steering to keel hung rudder. Iron outside ballast which has been re-bolted with the bolts insulated from the surrounding iron. Bright mahogany house sides, and coamings with bright mahogany and locust trim, caulked teak cockpit sole and seats. White topsides with blue boottop, green bottom, and light gray Awlgrip deck. NOTE: See Owner's comments at the end for her provenance and bibliography.

### Engines

2015 Yanmar 3YM30AI, 3-cyl. 28-hp, fresh-water cooled diesel engine with control panel upgrade set in custom bronze bezel, Kanzaki K-2P1 transmission, 2012 Kobelt 2042 single lever engine controls, 2011 custom 4 blade feathering Variprop, 1" Aquamet stainless steel shaft, 2015 engine compartment lined with marine sound insulation. Approx. 6.5 kn cruise, 7 kn max.

## **Tanks**

35 gal. fuel in 316 stainless steel tank,

100 gal. water in three 316 stainless steel tanks,

2015 8 gal. 316 stainless steel holding tank.

## **Electrical**

2015 12v system, two 2015 12v AGM batteries, 2015 125 amp alternator, 2015 Bass circuit-breaker panel, 2015 master switch, digital battery condition indicator, 20 watt flexible solar panel diode integrated.

2016 new Inverter.

## **Accommodations**

### **Accommodations**

Sleeps 4 in 1 queen and 2 single Concordia berths. Headroom 6'-2". Modified Concordia interior with stowage right forward. The forward cabin has been modified from the standard layout: queen size berth forward to port, shelf outboard and above chart stowage and chest of drawers to starboard. The head is next aft to port with storage cabinets, WC with holding tank, drawers and sink. Opposite to starboard are hanging lockers with shelves and exterior vented propane storage. The main cabin though rebuilt and improved has the overall appearance of the traditional Concordia layout and joinery with original Concordia berths port and starboard, drop leaf bright mahogany dining table on centerline and Concordia heating stove forward to port. The galley is aft with custom welded stainless steel copy of the original Concordia style sink, hot and cold water in galley and head, 2011 4 gal. 2015 Isotemp hot water heater, cockpit shower, 2015 Force 10 two-burner gimbaled propane stove with oven and stainless steel icebox 4" of closed cell urethane insulation. The interior finish is white paint and varnish with teak cabin sole finished with sealer. MEMORY V is fitted with 3 hatches, 4 opening ports w/ screens, and 2 ventilators. The entire interior has been rebuilt to include new Concordia style knotty pine bulkheads using plywood, which offers greater strength in the mast step area.

## **Sales & Rigging**

Masthead Concordia yawl rig with select Sitka spruce 2005 D-shaped double spreader main mast (4' taller than typical). Removable inner staysail stay. Select Sitka spruce 2011 main boom, 2005 mizzen boom and oval mizzen mast. Main mast height 50' from water line. 2005 316 stainless steel standing rigging to 316 stainless steel Navtec turnbuckles, Sta-L ok terminals. Braided polyester halyards, Regatta Braid sheets. Harken roller furler. Jiffy reefing on boom. Spinnaker pole with complete spinnaker gear. 2008 bronze and black locust gallows. Bronze Merriman A&R hardware. Bronze Merriman genoa tracks, 4 wood snatch blocks, 4 bronze genoa cars w/ swivel and 6 bronze genoa track cars. 2012 custom Harken mainsheet traveler track on bridge deck with bronze Harken mainsheet car, custom Reineck bronze control blocks and six part custom Reineck bronze mainsheet block. 3 bronze Bariant halyard winches, self tailer for main. 2 bronze reefing winches s on boom. 2 bronze Lewmar #48 self tailing primary and 1 smaller bronze Lewmar self tailing secondary winch for roller furler. Sail inventory: 2005 UK triradial main, 2008 UK No. 1 radial cut w/ furling covers, 2012 UK No. 2 radial cut, 2011 UK working jib radial cut w/ furling covers, 2008 UK mizzen radial cut, 2008 UK mizzen staysail, 2006 North spinnaker w/ snuffer, 2010 UK MPS asymmetrical w/ snuffer.

## **Ground Tackle**

35 lb. Delta plow anchor, single bronze bow roller, 2008 20' chain lead, 300 ft. 5/8" nylon rode, 2015 bronze Lofrans LW7921 electric windlass w/ remote, Fortress FX-23 aluminum anchor w/ 6&#39; 3/8&#34; chain and 200&#39; 3/4&#34; braided rode.

## **Equipment**

2015 Bilge blower

2015 Fireboy Halon fire extinguishing system in engine compartment,

2015 gas-fume detector

2x 2015 electric bilge pumps with audible alarm in cockpit

2015 Whale manual bilge pump

2015 wash down pump

2015 cylindrical type radar reflectors on upper shrouds port and starboard

2 x 2015 standard fire extinguishers

2015 flares

4 PFDs

Strobe light

Foredeck light

Compact stainless steel boarding ladder

Brass bow pulpit and stern rail

Double stainless steel lifelines

6 40' dock lines

3 fenders

2012 traditional wide whale corduroy main cabin cushions

2" Concordia berth pads, cockpit table

Canvas: 2012 full deck awning with side panels

2015 companionway screen

2013 spinnaker pole cover

2012 stove cover, mouse house

2 hatch covers, sail covers

Tiller and compass covers

Screens for all 5 opening ports

Inflatable: 2008 West Marine HP-275 High Pressure Inflatable Floor Roll-Up Sportboat Passengers: 4, Length: 9', Beam: 4'-11".

Liferaft: 2010 Zodiac, Coastal 04 US V, XDC-AZM76-K809

## **Pram**

Concordia Bateka built 1957 by Abeking and Rasmussen; purchased from IYRS 2008 by Tom Potter. Shaw and Tenney oars with oar lock, lift bridle. 2015 Torqeedo electric outboard with GPS. Pram sits on cabin top with aft chocks removable.

## Electronics & Navigation

2015 Chelsea ship's clock and barometer

Danforth White compass

2015 B&G Model V50 HF radio

2015 Garmin GPS MAP 5212 chartplotter with integrated autopilot and Tacktick instruments

2015 Raymarine SmartPilot X-5 Tiller

Grand Prix autopilot integrated with chartplotter

2008 Tacktick Instruments: Wind: T220 Vertical Wind Transmitter, T112 Analogue Display; Speed/Depth: T103 Speed and Depth System Compass, T909 Transducer,

Additional Displays: 2012 two T110 Maxi Displays

## Historical Comments

MEMORY V, ( x WINNIE OF BOURNE) is hull number 11, was built in 1952 for John Parkinson. For nearly three decades she was a presence in New England waters. His cruising in Buzzard's Bay is chronicled in his book *The Bay and the Sound*, 1968, by Little Brown with photographs by Norman Fortier. In 1960 after the Newport to Bermuda Race he made passage to Portugal, Scotland and Scandinavia cruising the Baltic and the Gulf of Bothe. A recent issue of *WoodenBoat Magazine* reprises the cruise. She completed six Newport to Bermuda races: 1954, 1958, 1960, 1962 and 1964.

In 1986 Peter Gallant purchased her from the estate of William Glenn, Parkinson's co-watch captain. He began an extensive restoration in 1996 involving 6,000 man hours. His re-engineering and redesign improved strength, livability, longevity and performance. The interior was entirely rebuilt in the spirit of *Concordia* and all spars, cockpit coamings, seats, hatches, handrails, toe rails, cleats, etc., are new.

In 2008 J. Arvid Klein and Cynthia C. Crimmins purchased MEMORY V from Peter Gallant and undertook upgrades to her electronics and sail inventory.

In August 2014 during a NYYC race, MEMORY V, on starboard tack in her final start sequence was rammed and sunk by a port tack boat not in her class. She went down in eight feet of water on a sandy bottom. She was subsequently moved to Rockport Marine and underwent complete restoration at a cost of \$275, 000. A digitized reconstruction of her hull indicated no deformation. A pre-launch survey required by her insurance carrier is available.

Racing CRF:

70th Anniversary Concordia Regatta 2008, First Place

Eggamoggin Reach Regatta 2012, First Place

75th Anniversary Concordia Regatta 2013, Third Place

2014 New York Yacht Club Annual Cruise First Place, Astor Cup and First Place, Commodore's Trophy

## Bibliography

*Concordia Yawls, the First 50 Years*, compiled and edited by Elizabeth Emirs, published 1988 by Dreadnought company, Inc

*The Bay and the Sound*, second printing 1968 by Little Brown and Company with photographs by Norman Fortier.

*My Life in Boating, the Concordia Yawls*, by Waldo Howland published 1988 Mystic Seaport Museum, Mystic Connecticut

Winnie of Bourne, self published by Andrew LeBuhn documenting the 2010 Eggamoggin Reach Regatta and the New York Yacht Cruise. The New York Yacht Club library has a copy

**Periodicals:**

*Yacht*, "Die Wucht von der Weser," (The Stunner from the Weser") a special issue July 2012 covering the Concordia Yawl with many pictures of her as *Winnie of Bourne*;

*The Concordian* compiled and edited by John Eide published spring and fall.

*WoodenBoat Magazine*, John Parkinson's Scandinavian Passages, June 2010

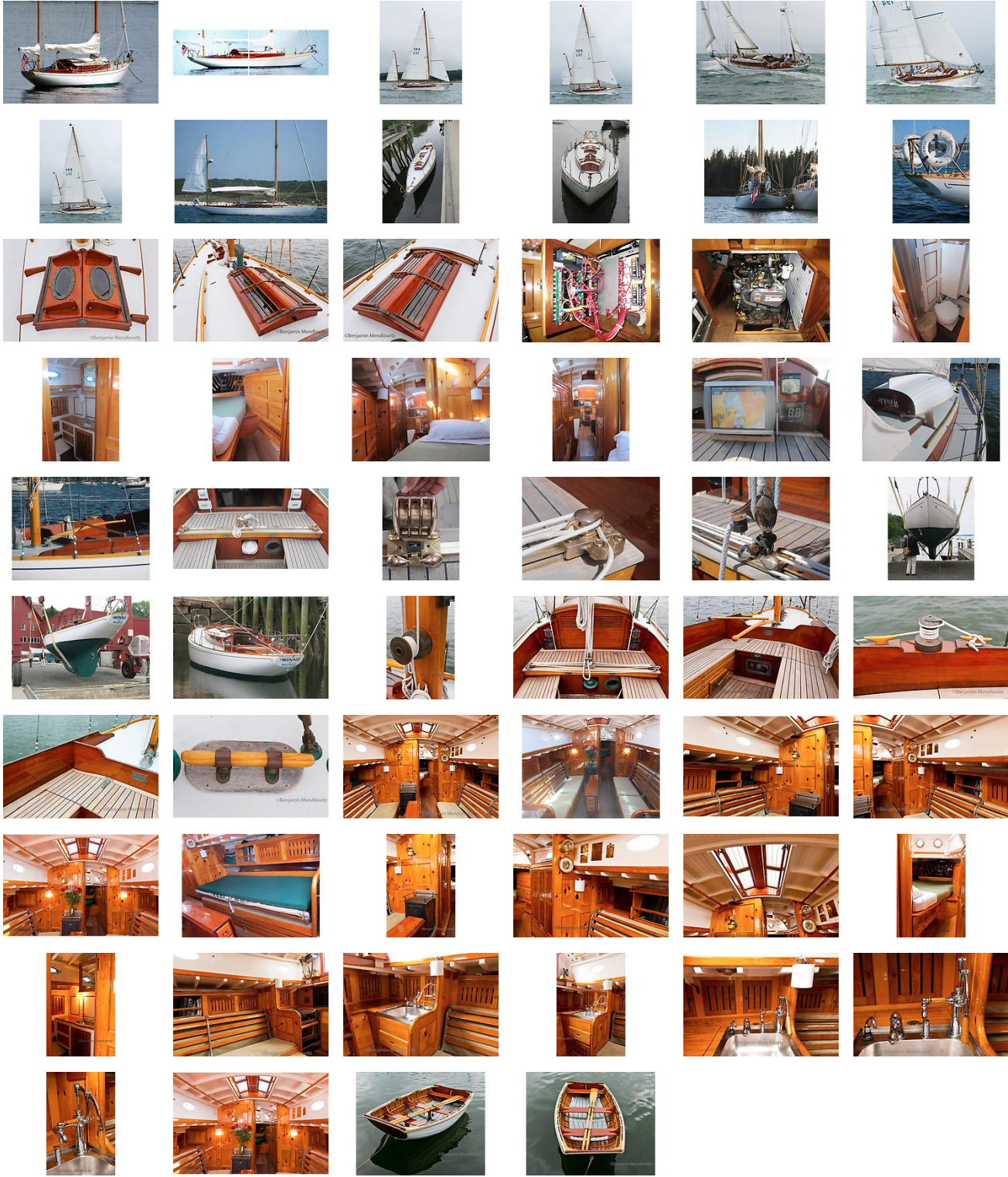
*CCA Journal*

**Disclaimer**

The Company offers the details of this vessel in good faith but cannot guarantee or warrant the accuracy of this information nor warrant the condition of the vessel. A buyer should instruct his agents, or his surveyors, to investigate such details as the buyer desires validated. This vessel is offered subject to prior sale, price change, or withdrawal without notice.**customContactInformation**

Call Jim Payne on His Cell 207.518.8177

# GALLERY



# LOCATION MAP

