



1963 Bertram 31

Boat Type: Flybridge

Address: Rockport, ME, US

Price: \$350,000



OVERVIEW

Double Bogie is a Bertram 31 like no other! Conceived and built at the Yachting Solutions Resto Mod shop in Maine, as the ultimate picnic/day boat. DB was built on the deep V hull that has made Hunt famous, this boat is an absolute tailor made hot rod! No detail has been spared, the build was a full tear down, only the fiberglass hull, weather ring deck and fly bridge structure remain of the original boat shell. Features such as a customized teak interior, new custom fiberglass windshield, new cockpit deck, custom teak cockpit seating, rear facing sun lounges, custom upholstery, all new wiring and plumbing, new engines, original castings and hardware re-plated, custom teak fly bridge dash, seating and paint.....more than can be listed here. Built to stand out from the sea of same same picnic type boats and "Down East" cruisers, now is the opportunity to own a legend, in better than new condition, at a fraction the cost of new construction. Available right now, owner is moving up.

SPECIFICATIONS

Basic Information

Manufacturer:	Bertram	Vessel Name:	Double Bogey
Model:	31	Boat Type:	Flybridge
Year:	1963	Hull Material:	Fiberglass
Category:	Power	Hull Type:	
Condition:	Used	Hull Color:	
Location:	Rockport, ME, US	Designer:	C Raymond Hunt
Available for sale in U.S. waters:	Yes	Flag of Registry:	

Dimensions & Weight

Length:	31 ft - 9.45 meter	Draft - max:	-
LOA:	-	Bridge Clearance:	-
Beam:	-	Dry Weight:	-

Engine

Make:	MerCruiser	Engine Type:	Inboard
Model:	383	Drive Type:	Direct Drive
Engine(s):	2	Fuel Type:	Gas/Petrol
Hours:	215	Horsepower:	340 (Individual), 680 (combined)
Cruise Speed:	26 MPH	Max Speed:	32 MPH
Range:	-	Joystick Control:	No

Tank Capacities

Fuel Tank:	200 gallons - 1 tank(s)	Holding Tank:	7 gallons - 1 tank(s)
Fresh Water Tank:	37 gallons - 1 tank(s)		

Accommodations

Total Cabins:	1	Crew Cabins:	-
Total Berths:	-	Crew Berths:	-
Total Sleeps:	-	Crew Sleeps:	-
Total Heads:	1	Crew Heads:	-
Captains Cabin:	-		

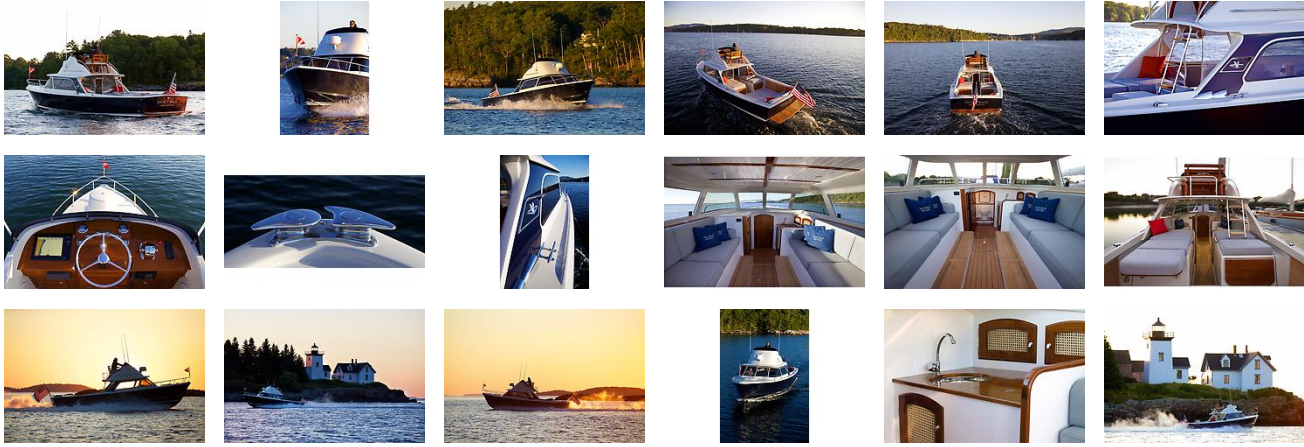
DESCRIPTIONS

Disclaimer

The Company offers the details of this vessel in good faith but cannot guarantee or warrant the accuracy of this information nor warrant the condition of the vessel. A buyer should instruct his agents, or his surveyors, to investigate such details as the buyer desires validated. This vessel is offered subject to prior sale, price change, or withdrawal without notice.**customContactInformation**

Call Bob Chace cell. 401-588-2385

GALLERY



LOCATION MAP



ROBERT CHACE
Yachting Solutions
229 Commercial Street
Rockport, ME, US
Office: (207) 236-8100
Mobile: 401-588-2385
rchace@yachtingsolutions.com

